

11 SETTINGS AND CUSTOMISATIONS

Settings tab allows you to change the interface of your application whether its changing colour or hiding the ribbon to increase space for analysing your charts.

11.1 HOW TO HIDE THE RIBBON

The ribbon menu can be hidden when not in use, this then allowing desktops or charts to be maximized and creating a bigger work space.

If you want to hide the ribbon this can be done by selecting the Hide Ribbon button located on the **Settings** Tab

By selecting the icon this will remove the ribbon from the application providing a bigger work space. (See screenshot below)



MAVERICK User Guide

11.2 HOW TO DISPLAY THE NEWS FEED

News Feed functionality coming soon

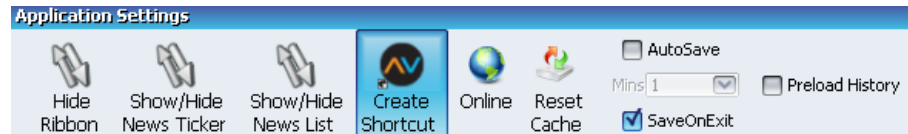
11.2.1 HOW TO HIDE THE NEWS FEED

News Feed functionality coming soon

11.3 HOW TO CREATE A MAVERICK SHORTCUT

The Maverick shortcut allows you to access the application by simply double clicking the icon located on your desktop without the hassle of needing to open up a web browser and input your login details.

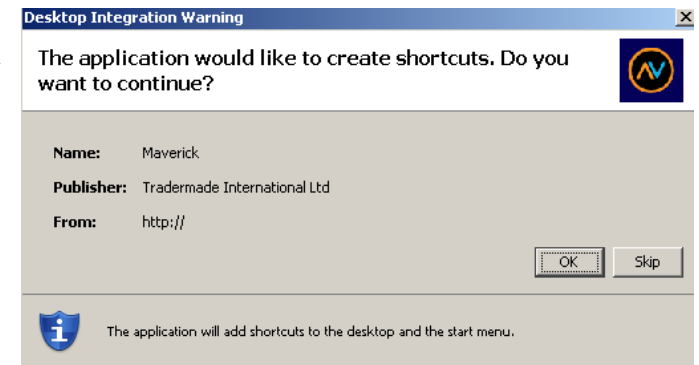
To create a shortcut follow the steps below:



This will generate a window, requesting you to input your password to create the shortcut as shown: Input your password & select create:



Select Ok



A Maverick shortcut icon will now appear on your desktop and can be used to launch the application in place of the Web login page.



Maverick

MAVERICK User Guide

11.4 OFFLINE MODE

By switching the application to off-line mode, you are able to use the application without a connection – you can still view your open charts but no updates will come through.

To turn on the offline mode follow the steps outlined below:

Go to the **Settings** Tab

Underneath Application Settings un-tick the *online* button



The application name along the top of the will indicate that its offline.



11.5 RESETTING THE CACHE

This functionality will be advised by the Trademade Support team when required.

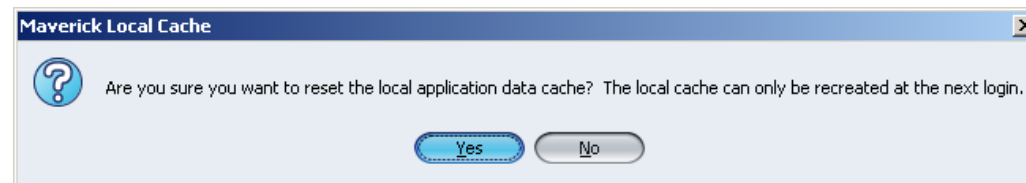
To reset the cache follow the steps outlined below:

Go to the **Settings** Tab

Underneath Application Settings select the *re-set cache* button



A java window will appear



Yes = Will reset the cache and it will take affect when you next login to the application

No = Will cancel the command and have no impact on the application

MAVERICK User Guide

11.6 HOW TO ENABLE AUTOSAVE

For ease of use and to minimize data loss the application comes with an auto save functions. This will save all changes to the current open desktops at a give interval. The setting is turned on by default and set to 10min.

Autosave eases the worry of losing any work, it saves changes to the open desktops.

By default *Autosave* is turned off. To activate and amend the timescale that this functionality takes place follow the steps below:

Go to **Settings** Tab

Underneath *Application Settings* Tab is the *Autosave* button

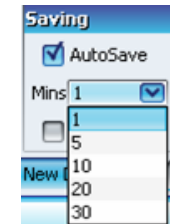
When autosave initiates it shows the following message in the centre of the application:



Tick the box next to *Autosave*; this will activate the *Mins* option below, creating a drop down list.

Within the drop down list is a selection of times that can be selected as to when *Autosave* comes into action.

The times are shown in the screenshot to the right ranging from 1 minute to 30 minutes.



11.6.1 HOW TO TURN OFF AUTOSAVE

To deactivate autosave follow the steps below:

Go to **Settings** Tab

Underneath *Application Settings* Tab un-tick the *Autosave* button



MAVERICK User Guide

11.7 HOW TO ENABLE SAVE ON EXIT

Save on Exit allows a user to save all your changes upon closing the application.

By default *Save on Exit* is turned off. To activate and amend the timescale that this functionality takes place follow the steps below:

Go to **Settings** Tab

Underneath *Application Settings* Tab is the *Save on Exit* button



Tick the box next to *Save on Exit*, this just means when you close the application you are not asked to save anything as any changes you have made will be saved automatically.

11.7.1 HOW TO TURN OFF SAVE ON EXIT

To deactivate *Save on Exit* follow the steps below:

Go to **Settings** Tab

Underneath *Application Settings* Tab un-tick the *Save on Exit* button



MAVERICK User Guide

11.8 HOW TO APPLY PRE-LOAD HISTORY



By default this functionality is switched off

Maverick has the capability to display the full history for all instruments. This functionality may be too intensive for some environments and turning this feature off may enhance the user experience. This function can still be used for selected charts by turning this option on and double clicking the axis and then turning it off again.

To turn on pre-load history follows the steps below:

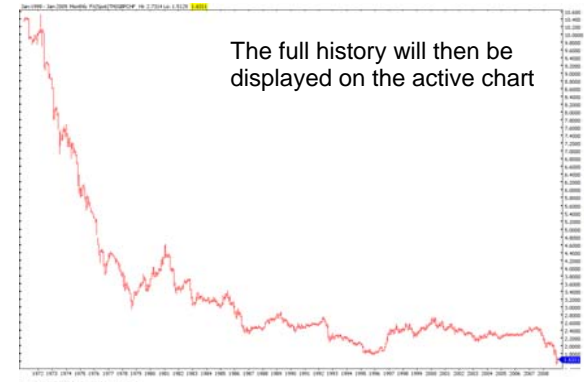
Go to **Settings** Tab

Within *Application Settings* tick the *Pre-Load History* Box



Double Click the bottom left hand corner of the chart (on the axis) (See screenshot below to the left)

The full history of the instrument will upload in the active chart (See screenshot below to the right)



11.8.1 HOW TO TURN OFF PRE-LOAD HISTORY

To deactivate Pre-Load History follow the steps below:

Double Click the bottom left hand corner of the chart this will take the chart back to its original settings prior to turning on full history.

Go to **Settings** Tab

Underneath *Application Settings* Tab un-tick the *Pre-Load History* button



MAVERICK User Guide

11.9 LOGGING

In order to troubleshoot any issues within the application the logging function can be used upon the advice of Tradermade support staff. By default this should be set to off unless otherwise advised.

11.10 HOW TO AMEND THE CHART COLOUR

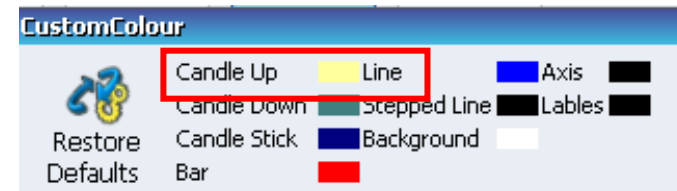
For those users that have previously used applications such as Reuters graphics, the application have the functionality to change the application colour. There is White background stock option and 2 custom colour sets that will allow you to choose how you would like the charts to be displayed. These setting will be saved for future sessions.

To amend the colour of the background or customize the chart:

Go to **Settings** Tab

Select *Custom 1* or *2*

For example if you wish to change the colour of 'Candle Up' simply click on the colour box (see screenshot below to the right)



This will then activate a colour settings window allowing you to customize the colour of 'candle up' (See screenshot to the right)

If want to put the Settings back to the original layout select *Reset Default* (See screenshot below)



11.11 HOW TO CHANGE THE CHART TIMEZONE

Chart timezone allows you to shift the x axis by a set number of hours to coincide with your timezone. The data does not shift it is solely the x axis time zone that is shifted accordingly.

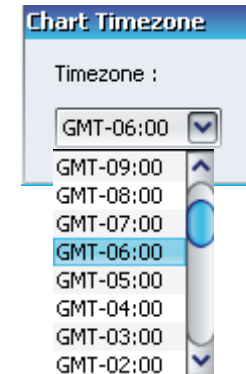
This feature is only available on an intraday chart.

To amend the chart time zone follow the steps outlined below:

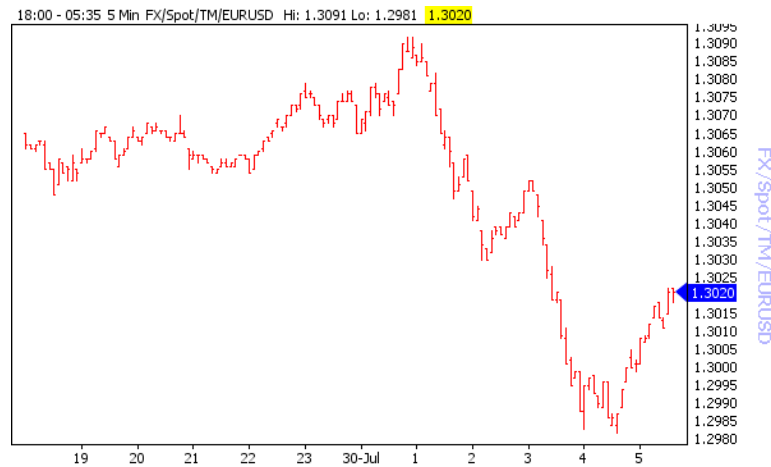
Go to **Settings** Tab

Underneath *Chart Timezone* Tab select the required timeframe from the drop down list. (See screenshot to the right)

Below is an example displaying how the axis amends when you amend the timezone from the drop down list:

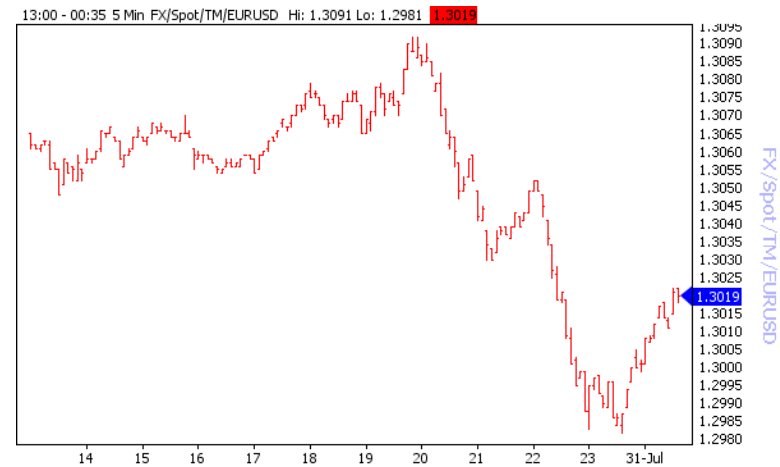


EURUSD / -06.00 GMT Timeframe



Copyright ©1985-2010 Tradermade International Ltd

EURUSD / +13:00 GMT Timeframe



Copyright ©1985-2010 Tradermade International Ltd