

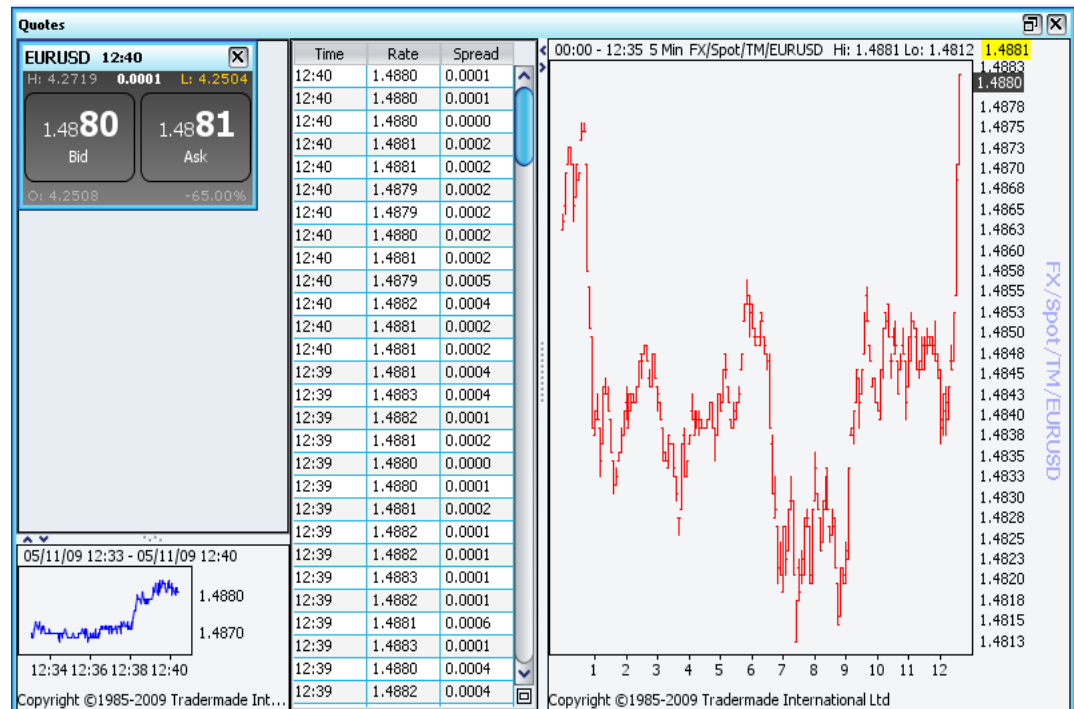
## 7 QUOTES FUNCTIONALITY

Quotes allows a user to display quote information (i.e. bid, ask, etc). It also allows the option to display a chart, a quote ticker history, and a second-based ticker chart for the currently selected instrument.



Quote operations can be found in the following areas:

- Quick links bar
- Chart Tab of the ribbon
- Quotes Tab of the ribbon



# MAVERICK User Guide

## 7.1 HOW TO CREATE A QUOTE

To create quotes follow the steps below;

Go to **Quotes Tab**

Select **New Quote**

By default the Quotes grid, Quotes Chart and Ticker Chart will display.

### Quotes Grid

Holds multiple quotes, each representing quote information for a given instrument.

### Quotes Chart

Displays the selected instrument, by default it displays 10 minute Interval for the present day.

### Ticker Chart

Displays a second based tick chart of the selected instrument. It displays up to 10 minutes worth of history.

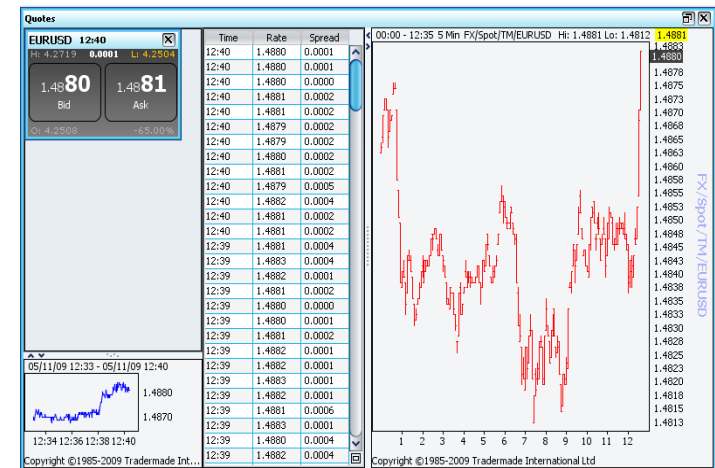
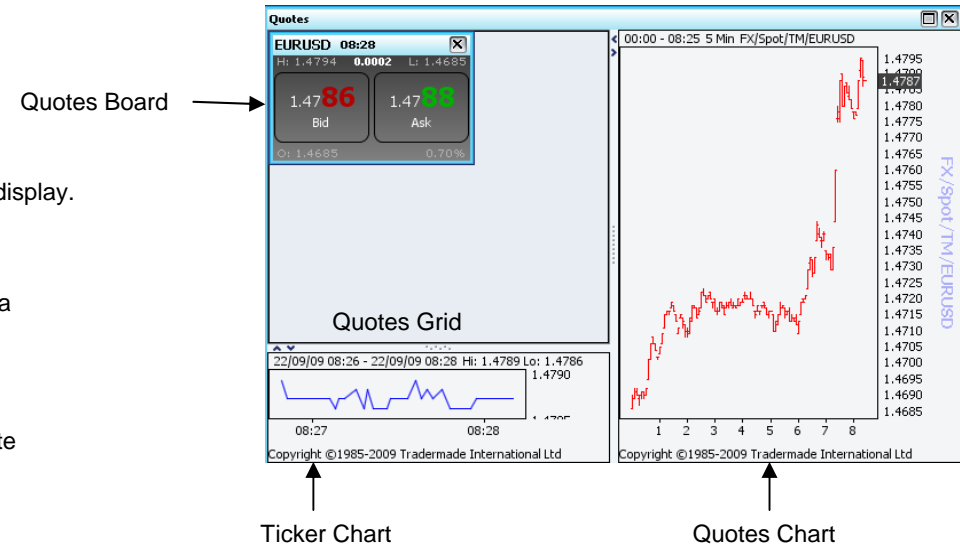
By default the *Ticker* is turned off, to turn this feature on;

Go to **Quotes Tab**

Select **Display Ticker**, the icon will become depressed and apply to the active Quote.

### Ticker

Displays the last 200 quote prices received. It will display the time, mid price and the bid/ask spread.



Ticker

## 7.2 HOW TO SAVE A QUOTE



The same procedure applies to saving desktop containing quotes as it is to saving desktop containing only charts. There are two ways of being able to save any changes you have made to the active desktop you are currently using via one or two simple clicks.

Along the left hand side of the application is the **Quick Links Bar**, the 5<sup>th</sup> button down is the *Save Desktop* Icon

By selecting the icon this will save all the amendments that have been made to active desktop since the application has been launched.

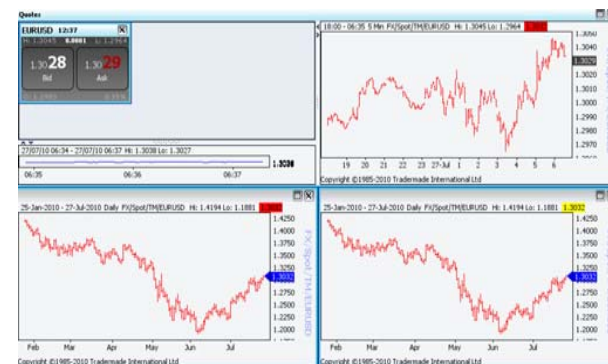
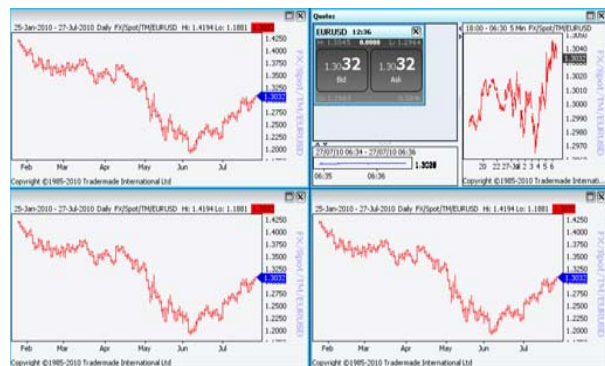


## 7.3 HOW TO DELETE A QUOTE

To delete a quote follow the steps below:

In the top right hand corner of the quote there is two icons:

- This icon allows you to maximize the quote
- This icon deletes a quote



When a chart/quote is deleted depending on the amount of charts/quotes you have applied the layout will amend. The layout will adjust to what is selected under *Auto Layout* via **Desktop Actions**.

Drag Buttons here

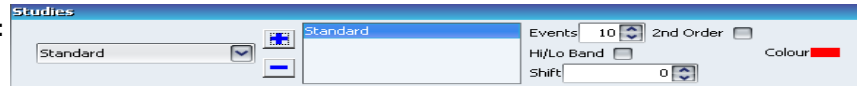


**!** If there is only 1 chart in a desktop it can not be deleted, there must be at least two charts in a desktop

# MAVERICK User Guide

## 7.4 HOW TO APPLY A MOVING AVERAGE TO A QUOTE

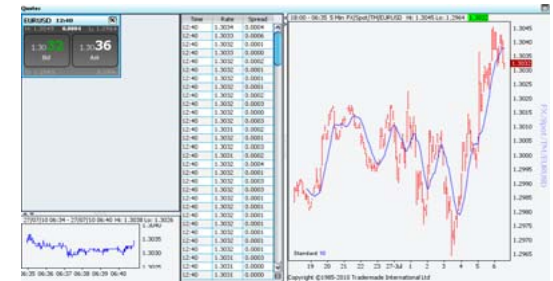
### Apply a Moving Average:



Go to **Studies** Tab

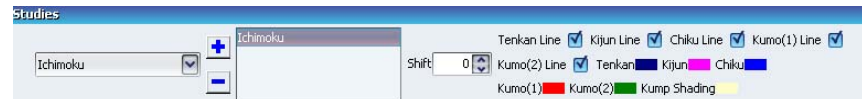
Click where it shows Standard, this will generate a drop down list Moving Averages are highlighted in blue.

Select the **+** Icon, the Moving Average will apply to the chart and the context on the right hand side will change.



## 7.5 HOW TO APPLY A STUDY TO A QUOTE

### Apply a Study:



Go to **Studies** Tab

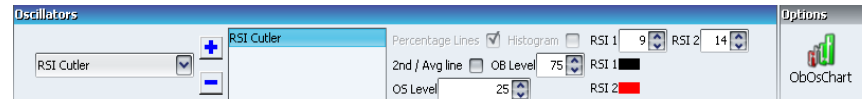
Click where it shows Standard, this will generate a drop down list Studies are highlighted in red.

Select the **+** Icon, the Study will apply to the chart and the context on the right hand side will change.



## 7.6 HOW TO APPLY AN OSCILLATOR TO A QUOTE

### Apply an Oscillator:



Go to **Oscillator** Tab

Click where it shows RSI Cutler, this will generate a drop down list

Select the **+** Icon, the Study will apply to the chart and the context on the right hand side will change.

The chart will decrease and the oscillator will be placed beneath the chart

