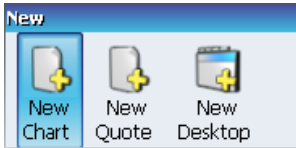
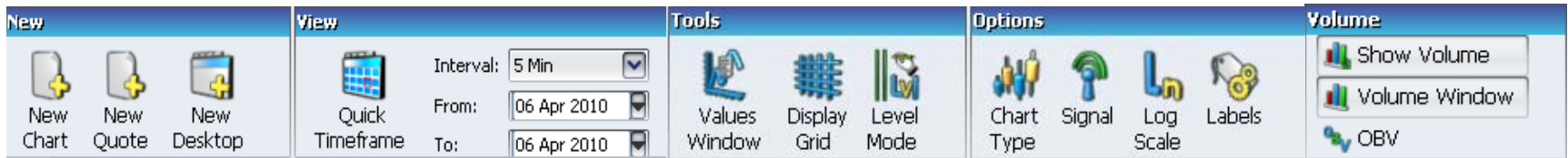


## 2. CHART TAB FUNCTIONALITY

The **Chart** tab allows you create, amend and customize the look and feel of your charts.



### 2.1 HOW TO CREATE A NEW CHART

Each desktop is automatically created with a default chart showing.

To create a multi-chart desktop by adding another chart to your desktop, simply go to **Chart** tab and selecting *New Chart* Icon

This will create a new chart within the active desktop again with the default settings i.e. EURUSD, timeframe, and chart type applied. (As shown below)

You can continue to add more charts in this way to your desktop.



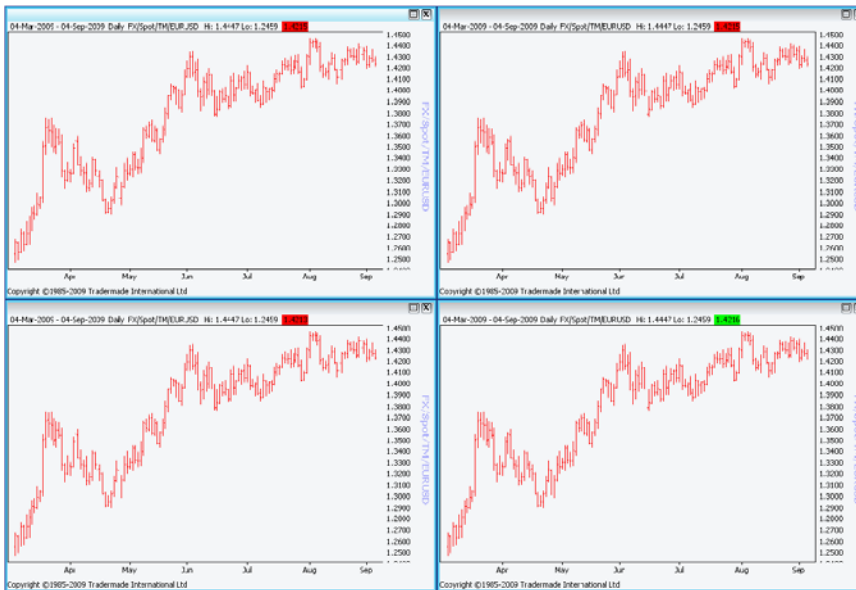
## 2.2 HOW TO DELETE A CHART

To delete a chart follow the steps below:

In the top right hand corner of the chart there are two icons:

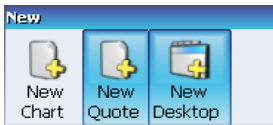
This icon allows you to maximize the chart  This icon deletes a chart

**!** If there is only 1 chart in a desktop it can not be deleted, there must be at least two charts in a desktop



When a chart is deleted depending on the amount of charts you have applied the layout will adjust to what is selected under *Auto Layout* via **Desktop Actions**.

# MAVERICK User Guide



## 2.3 HOW TO CREATE A NEW DESKTOP & NEW QUOTE

If you want to add a new desktop this can be done by selecting **Chart** Tab and pressing *New Desktop* Icon within *New* Section as follows:

By selecting the icon this will create a new desktop in a new tab entitled 'New Desktop x'.

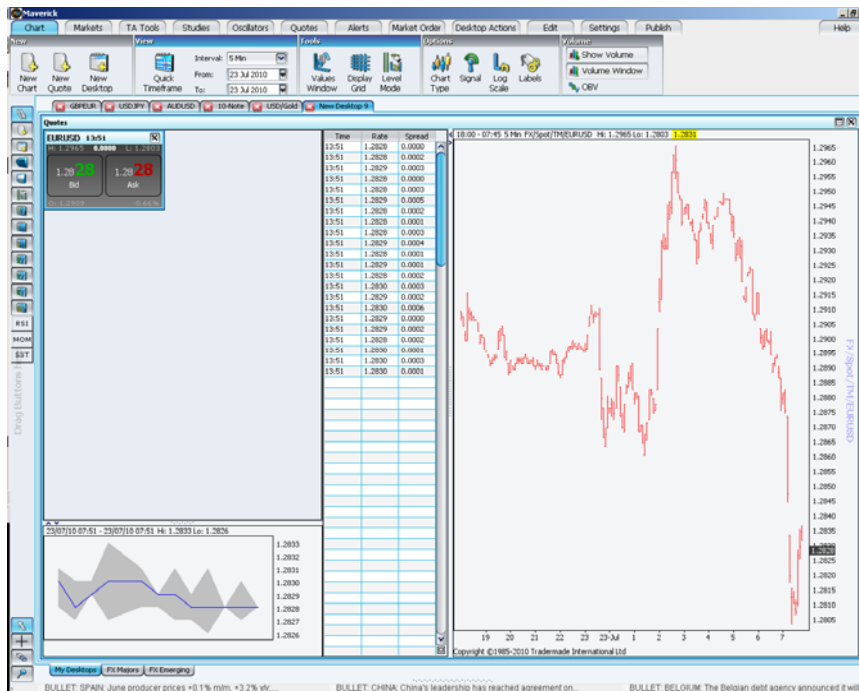
(See screenshot to the right)



If you want to add a new quote this can be done by selecting **Chart** Tab and pressing *New Quote* Icon within *New* Section as follows:

By selecting the icon this will create a quote within the active desktop.

(See screenshot to the left)



# MAVERICK User Guide

## 2.4 HOW TO CHANGE THE TIME-PERIOD

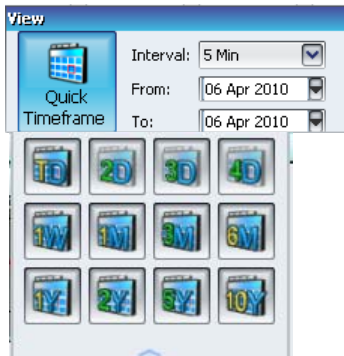
Maverick allows you to customize the dates and interval you wish to view. There are two ways of amending the timeframe:

### 2.4.1 AUTOMATIC TIME-FRAME

In the *Quick Timeframe* slide out you will find pre-selected timeframes ranging from short, medium and long term accessible in two clicks.

By default the interval and timeframe are set to 6 Months Daily.

We will now change the timeframe to 10 Years Monthly. This can be done as follows:



Click the *Quick Timeframe* Icon. (See screenshot above)

This will then generate a slide out showing pre-selected timeframes. (See screenshot to the right)

We are going to change the timeframe to be a 10 year

Monthly chart and so we click on the 10year Icon.

Your chart will now display a 10year Monthly chart.

For your reference the other buttons within the *Quick Timeframe* slide out are shown below:



# MAVERICK User Guide

## 2.4.2 MANUAL TIME-FRAME

Manual time frame allows you to select exact dates as parameters for your charts.

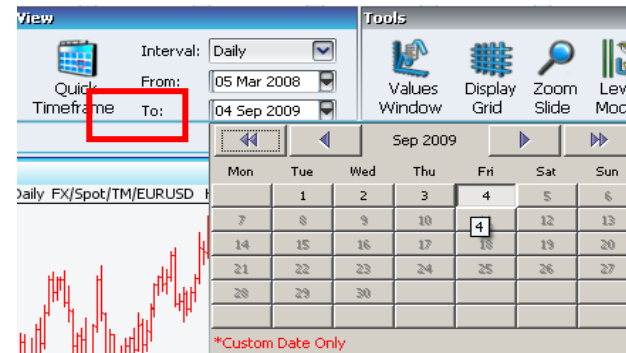
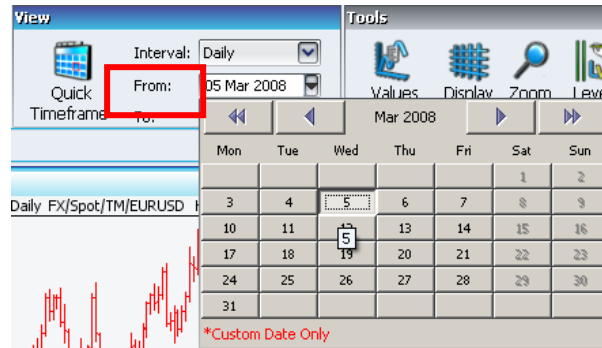
### To apply manual time-frame:

Select the required Interval from the *Interval* drop down list under the Section Interval/Timeframe:

The following intervals can be applied:

<b>1 Minute</b> = Today	<b>2 Minute</b> = Today	<b>5 Minute</b> = Today	<b>10 Minute</b> = Today	<b>15 Minute</b> = Today	<b>30 Minute</b> = 5 Day
<b>1 Hour</b> = 5 Day	<b>2 Hour</b> = 1 Month	<b>3 Hour</b> = 1 Month	<b>4 Hour</b> = 1 Month	<b>6 Hour</b> = 1 Month	<b>8 Hour</b> = 1 Month
<b>12 Hour</b> = 1 Month	<b>Daily</b> = 6 Month	<b>Weekly</b> = 1 Year	<b>Monthly</b> = 10 Year	<b>Quarterly</b> = 10 Year	

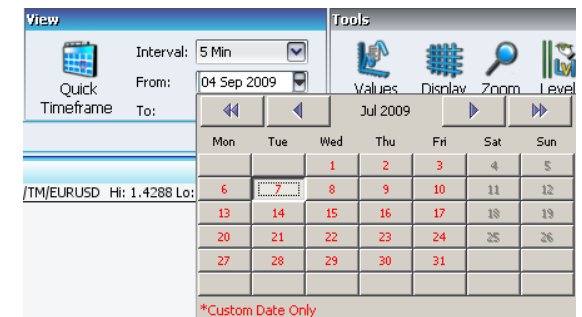
Once the interval has been selected, the dates required can be altered by the 'From' & 'To' Drop down lists.




When selecting the dates by the *To* and *From* drop down lists, there are two types:

Dates in black will span the range, whereas dates in red will plot just that one day.

(Screenshot to the right displays an example of red dates)



 Dates in black will span the range, whereas dates in red will plot just that one day.


# MAVERICK User Guide



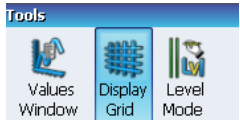
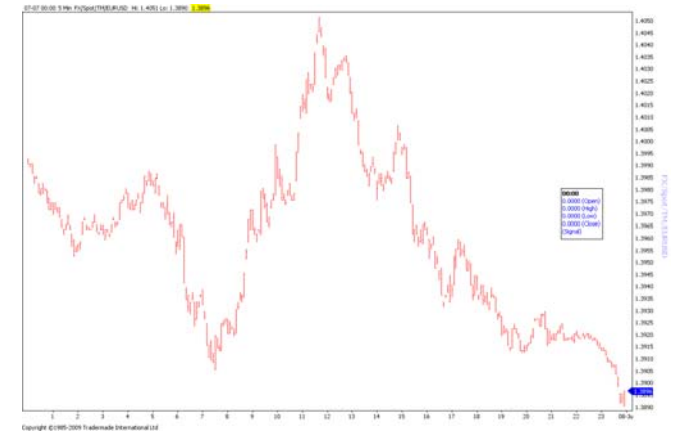
## 2.5 HOW TO DISPLAY THE VALUE WINDOW

The value window will display a moveable window in the top left hand corner of the chart which shows the high, low, open and close as well as the signal type and any study or oscillator value. The value window is also a drag and drop functionality that can be re-positioned anywhere on the chart.

To apply the *Value Window* follow the steps below:

Go to **Chart** Tab. Under *Tools* Section select *Value Window*  Icon,

Value Window is a drag and drop feature which enables it to be moved into another location of the chart (See screenshot to the right)

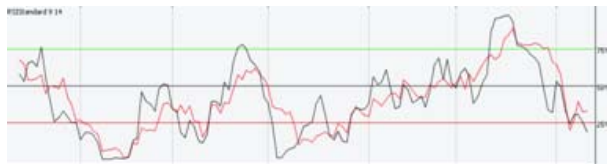


## 2.6 HOW TO DISPLAY THE GRID

This feature can also be applied to oscillators by selecting the oscillator and then the display grid icon.

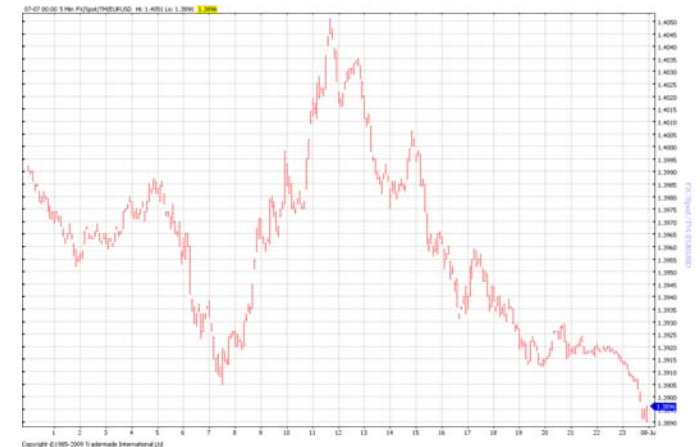
To display a grid on the chart follow the steps below:

Go to **Chart** Tab. Under *Tools* Section select *Display Grid*  Icon



Into the text area on the *Find Bond*,   
<enter> the symbol you would like to search

This will generate a drop down list with instruments matching your search



# MAVERICK User Guide




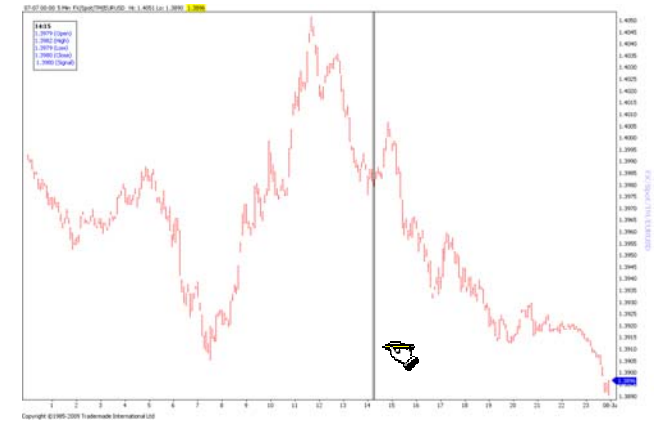
## 2.7 HOW TO DISPLAY THE LEVEL MODE


The level mode, will allow you to scroll across the chart via the cursor key to see the high, low, open and close as-well as the signal type for each event on the chart. When *level mode* is selected by default it will bring up the value window making the icon depressed, to turn off this function simply unclick the *values window* icon.

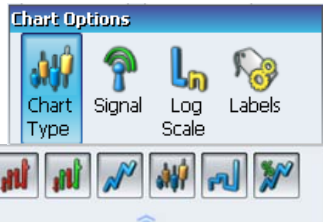
To apply the *Level Mode* follow the steps below:

Go to **Chart** Tab

Under *Tools* Section select Level Mode  Icon.



The default cursor will become a  to scroll across the chart




## 2.8 HOW TO CHANGE THE CHART TYPE

The following chart types are available:



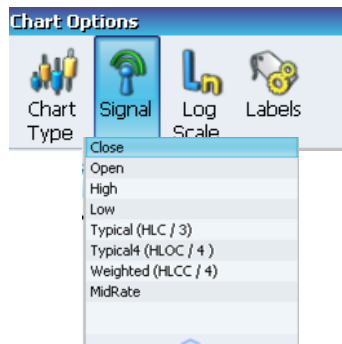
If you want to amend the chart type applied to your chart follow the steps below:

Underneath **Chart** Tab is the *Chart Type*  Icon. This will then generate a slide out showing the available chart types

The chart type can also be amended via shortcut keys which are available via the keyboard.

Candle   Line   Bar   Trend Bar


# MAVERICK User Guide



## 2.9 HOW TO CHANGE THE SIGNAL TYPE

The Signal price is used to calculate moving average lines. By default the *Signal Type* is set to *Close*.

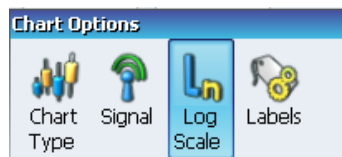
If you want to amend the signal type follow the steps below:

Underneath **Chart** Tab is the *Signal Type*  Icon

This will then generate a slide out showing the available signal types.




Each Signal is explained in more detail in the Glossary Section



## 2.10 HOW TO APPLY THE LOG SCALE

Log scale changes the graph scale from arithmetic to a logarithmic scale. Below are screenshots showing how a chart would look with and without log scale applied.

If you want to apply Log Scale follow the steps below:

Underneath **Chart** Tab is the *Log Scale*  Icon


This will then amend the scale of the axis and chart.

# MAVERICK User Guide

## 2.11 HOW TO AMEND CHART LABELS

There are two sets of labels, current price label and the y axis label. The y axis label shows values of when a line is applied to a chart and the current price label is the value of the current trading price.

If you want to amend the Labels type follow the steps below:

Underneath **Chart** Tab is the *Labels*  icon. This will then generate a slide out showing the types of labels. On the next page are screenshots of the labels:

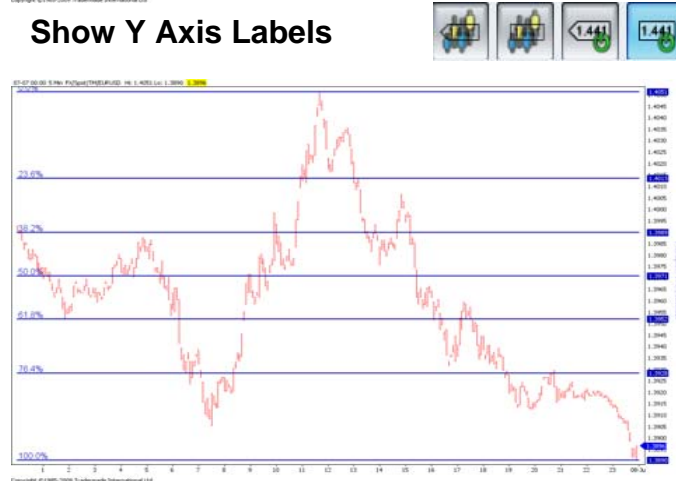
### Show Current Price



### Show Current Price - Transparent



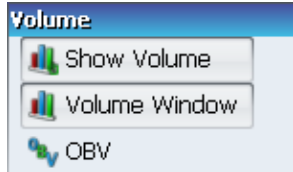
### Show Y Axis Labels



### Show Y Axis Labels - Transparent



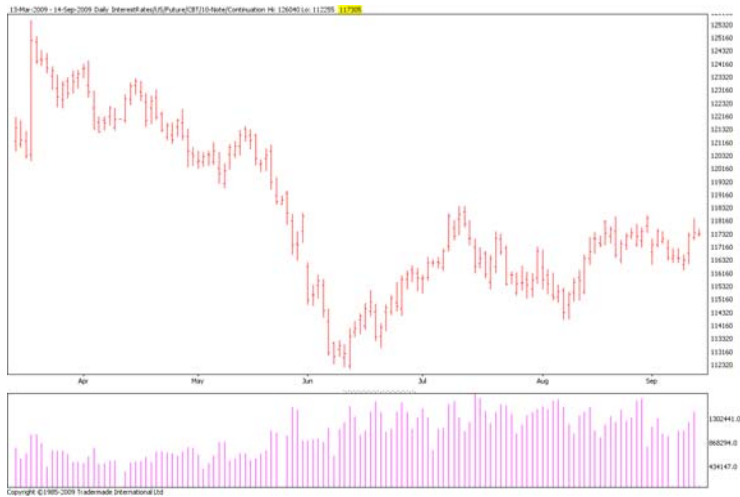
# MAVERICK User Guide



## 2.12 HOW TO AMEND THE VOLUME

When an instrument is applied that displays volume by default it will be displayed in a separate window below the chart. The Show Volume and Volume Window buttons will be depressed.

Volume data is not available across all instruments



To view the volume bars with the window applied follow the steps below:

- Select the *Show Volume* Icon within the **Chart** Tab
- Select the *Volume Window* Icon within the **Chart** Tab



To view the volume bars without the window follow the steps below:

- Select the *Show Volume* Icon within the **Chart** Tab



# MAVERICK User Guide

## 2.13 ON BALANCE VOLUME

On Balance Volume allows a user to display whether volume is flowing in or out of the instrument displayed within the chart.

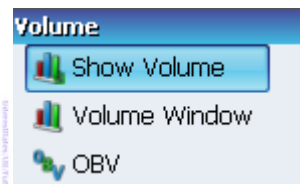
Volume data is not available across all instruments

### 2.13.1 HOW TO APPLY & REMOVE ON BALANCE VOLUME

Firstly, a volume instrument would need to be applied, by default the volume will be displayed in a separate window below the chart and both *show volume* and *volume window* will be depressed within the **Chart** Tab.

To activate OBV, select *OBV* button underneath *Volume* Section within **Chart** Tab. The Volume window will amend from displaying volume bars to a line.

(See screenshot to the right)



To delete or remove OBV from the active chart follow the steps below:

Go to **Chart** Tab

Under *Volume* Section select the *OBV* button (See screenshots to the right)

(See screenshot to the left)

## 2.14 HOW TO AMEND THE TITLE BAR

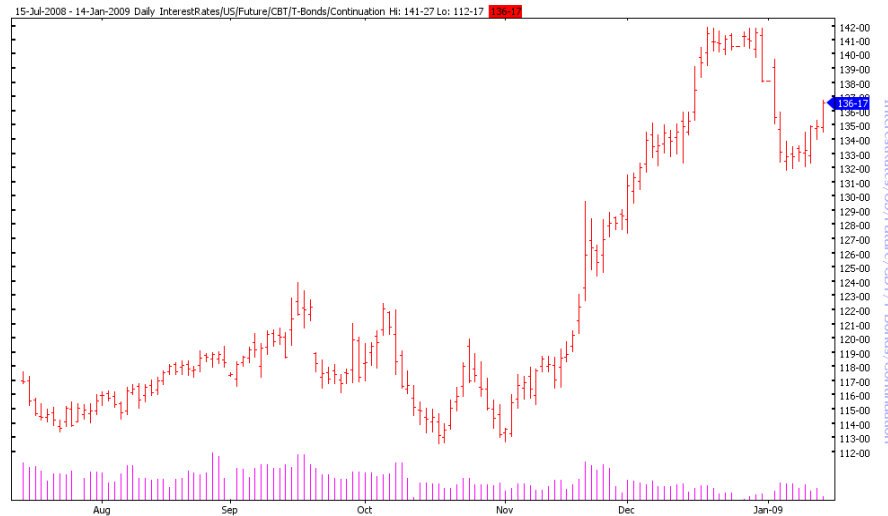
Right click below the blue highlighted area at the top of the chart. A box will appear containing the contents of the title bar in a tick formation. Un-tick or tick the contents you wish to show or not show on your chart

### The Y Axis

The Y axis displays the price. This axis can be dragged up and down to provide more space above and/or below the price action. To view the original layout of the Y axis double click on the axis. Along the side of the Y axis it also displays the instrument that is applied to the active chart (See screenshot to the left)

### The X Axis

The X axis displays the date and/or time. The left part of the x axis keeps the timeframe applied but allows you to scroll within the timeframe. The middle part of the x axis allows you to scroll into the future of the timeframe. To view the original layout of the X axis double click on the axis.



Copyright ©1985-2009 Tradermade International Ltd

The left part of the x axis keeps the timeframe applied but scroll within the timeframe.

The middle part of the x axis allows you to scroll into the future of the timeframe.

The right part of the x axis allows you to view into the future and past of the timeframe.

